



# SUMMER 2025 SHOPPING SHUTTLE

**Thursday, May 29, 2pm-5pm**

**Saturday, June 14, 10am-1pm**

**Thursday, June 26, 2pm-5pm**

**Saturday, July 12, 10am-1pm**

**Thursday, July 24, 2pm-5pm**

**Saturday, August 9, 10am-1pm**

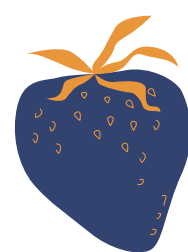
**Thursday, August 21, 2pm-5pm**

**Saturday, August 30, 10am-1pm**

**[Click Here to Sign up for Shopping Shuttle](#)**

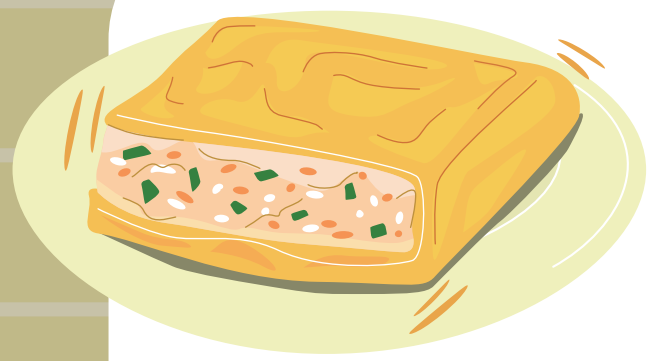
## Pick-up locations

- Bevier Road on Busch Campus – Thursdays 2-2:10PM & Saturdays 10-10:15AM  
(Next to Buell Apartments, across from ASB Annex II)
- Nichols Apartments on Busch Campus – Thursdays 2-2:10PM & Saturdays 10-10:15AM
- College Ave. Student Center on CAC – Saturdays 10:00-10:15AM

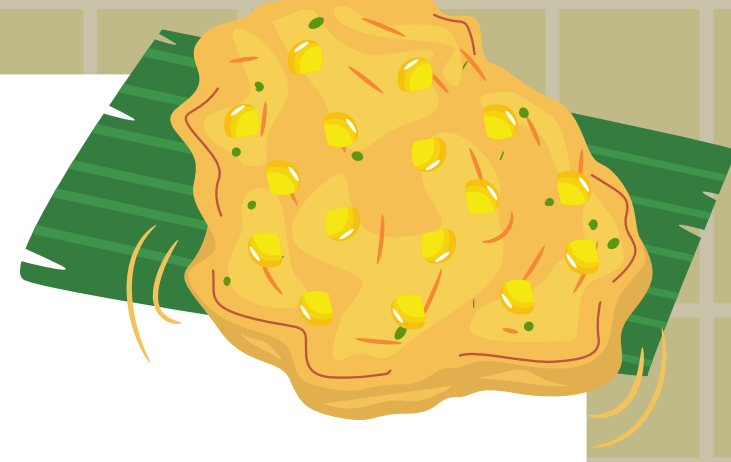


Rutgers Global–International Student and Scholar Services is offering the shopping shuttle service to local stores during the Summer 2025 term, so students who are on-campus can purchase groceries and other living essentials. You should sign up to reserve your spot on the shuttle; international students and scholars who have signed up will be given preference to ride on the shuttle.





# FALL 2025 SHOPPING SHUTTLE



**Thursday, September 4, 5pm-8pm**

**Saturday, September 13, 10am-1pm**

**Thursday, September 18, 5pm-8pm**

**Saturday, September 27, 10am-1pm**

**Thursday, October 2, 5pm-8pm**

**Saturday, October 11, 10am-1pm**

**Thursday, October 16, 5pm-8pm**

**Saturday, October 25 10am-1pm**

**Thursday, October 30, 5pm-8pm**

**Saturday, November 8, 10am-1pm**



**Thursday, November 13, 5pm-8pm**

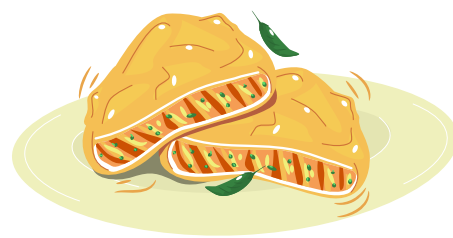
**Saturday, November 22, 10am-1pm**

**Saturday, December 6, 10am-1pm**

**Thursday, December 11, 5pm-8pm**

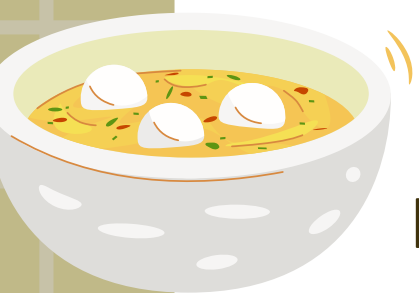
**Saturday, December 20, 10am-1pm**

**[CLICK HERE TO SIGN UP FOR SHOPPING SHUTTLE](#)**



## Pick-up locations

- Bevier Road on Busch Campus – Thursdays 5-5:10PM & Saturdays 10-10:15AM  
(Next to Buell Apartments, across from ASB Annex II)
- Nichols Apartments on Busch Campus – Thursdays 5-5:10PM & Saturdays 10-10:15AM
- College Ave. Student Center on CAC – Saturdays 10:00-10:15AM



Rutgers Global–International Student and Scholar Services is offering the shopping shuttle service to local stores during the Fall 2025 semester, so students who are on-campus can purchase groceries and other living essentials. You should sign up to reserve your spot on the shuttle; international students and scholars who have signed up will be given preference to ride on the shuttle.



**RUTGERS**  
Global

